

JL-130 5L

ULV COLD FOGGING MACHINE

Instruction Manual



Dear customers,

Please strictly follow the safety operation instructions and use the machine properly to improve the efficiency and to extend the service life of the machine.

You can contact with your local distributors or directly contact us for maintenance service or any other assistance.

CONTENTS

I. Matters need attention	01
II. Model number and Technical Parameters	02
III. Basic Working Principles	02
IV. Features	03
V. Application Fields	03
VI . Operation Instructions	03
VII . Trouble shooting	06
VIII.Warranty service	08
IX.Packing List	08
X. ULV Cold Fogger parts name	09

Matters need attention

1. Before use, please check if the electric supply is 220V/50Hz (110V/50Hz for some area), and also make sure there is air filter cotton in the base air filter, not blocked.

2. DO NOT overfill the solution tank above its Max. volume 5 L to prevent overflow. If the air filter cotton is wet, please wait until it gets dried before turn on.

3. To make sure the better spray effect, the motor speed is fixed, please do not detach or change the motor rotation. In case the spraying distance is close, adjust the control valve slightly. Only the water-soluble liquid can be used, make sure there is no impurities to keep the air filter unblocked.

4. Please power off when the following circumstances happened.

The machine exposed to the rain or gets wet; the motor ceased to work; the obvious change in the voice of motor; solution leakage; the motor doesn't work when start or other dangerous situations.

5. Must wear disposable protective suit and protective mask while working.

6. After use, please clean the residual solution with the clean water, and turn on to spray all to avoid the spray nozzle blocked and eroded.

Power off timely after use and clear the solution tank strictly following the instruction made by the liquid manufacture. The location for storage should avoid any exposure to wet, sun, collision and easy to be reached by children.

7. Do not use the machine in the rain. Forbid to plug or unplug with wet hands. The machine should not be stored near any flammable, explosive articles, or high temperature sites. Do not pull the electric wire violently to avoid damages caused by sharp objects. Do not turn on/off frequently to avoid the damage to the motor.

8. In case any machine breakdowns, cut off and call professional technician to check. If the problem is still unsolved, please contact us timely. DO NOT DISASSEMBLE the machine privately. Please ask the professional technician to repair. Do not repair the machine privately. Do not damage the power line with ALCI(Appliance Leakage–Current Interrupters) privately to avoid dangers.

Model number and Technical Parameters

Model Parameters	JL -130	JL -131
Power supply	AC220V/110V/50HZ	AC220V/110V/50HZ
Power	1000W	1000W
Tank Capacity	5L	5L
Sprayer Volume	470ml/min (adjustable)	470ml/min (adjustable)
Droplet Size	10–150 μ m	10–150 μ m
Effective Range	6–8m	3–8m
Net Weight	2.6kg	2.6kg
Gross Weight	3.7kg	3.7kg
Measurement(mm)	570*250*335	570*250*335

Basic Working Principles

ULV Cold Fogger using the high–power universal motor. The rotation of the fan blades to generate high–speed rotary cutting air. At the same time, the motor increases the pressure of the solution and send them to the confluences of the well–designed nipple and the high–speed air. The combined effect of high–speed rotary cutting air and the special–structured nipples resulted in the solution splits into small fog droplets.

Features

Small labor intensity, high efficiency, spraying one thousand square meters only ten minutes.

Centrifugal rotating sprayer , no blocking , droplet size is adjustable.

Meet all kinds of sanitary infection demands, including in poultry house.

Application Fields

1. Spraying and infection in breeding house, chicken house and poultry house etc.
2. Food processing ,planting industry, sanitary, transportation industry and public etc.

Operation Instructions

JL-130 Model:

1. Fill the tank with mixed solution then fasten the tank cap.

Kindly note:

A. DO NOT submerge the check valve into the tank/solution. (refer to Pic. 1)

B. DO NOT overfill, max volume for the tank is 5L, or it may damage the motor. (refer to Pic.2)



picture 1



picture 2

2. Plug in and connect the power

Kindly noted:

All the machines are equipped with leakage protector, and you need to press the trial button and check if it can automatically power off before using; if it can power off, press the reset button then the machine is all good and you can start to use it. If not, you need to change the a new cable.

Please do not disassemble the cable privately. (refer to below picture)



3. Press the switch and turn on the machine. (refer to below picture)



4. You can adjust the particle size by rotating the adjusting knob on the spray-head. (refer to below picture)



5. After use, please clean up the residual solution and wash the tank with clean water, then pour out. Refill the tank with some water and turn on the machine to spray with large flow rate for about 30seconds to avoid nozzle blocking or any corrosion.

Please cut off the power immediately after cleaning and put the machine in safe place and avoid any exposure to wet, sun collision and easy to be reached by children.

JL-131 Model

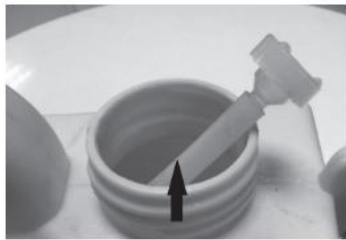
1. Fill the tank with mixed solution then fasten the tank cap.

Kindly note:

A. DO NOT submerge the check valve into the tank/solution. (refer to Pic. 1)

B. DO NOT overfill, max volume for the tank is 5L, or it may damage the motor.

(refer to Pic.2)



picture 1



picture 2

2. Plug in and connect the power

Kindly noted:

All the machines are equipped with leakage protector, and you need to press the trial button and check if it can automatically power off before using; if it can power off, press the reset button then the machine is all good and you can start to use it. If not, you need to change the a new cable.

Please do not disassemble the cable privately. (refer to below picture)



3. Rotate the knob on the front of the machine to turn on the machine and adjust the spraying distance. (refer to below picture.)



4. You can adjust the particle size by rotating the adjusting knob on the spray-head. (refer to below picture)



4. You can adjust the particle size by rotating the adjusting spray-head.
(refer to below picture)



5. After use, please clean up the residual solution and wash the tank with clean water, then pour out. Refill the tank with some water and turn on the machine to spray with large flow rate for about 30seconds to avoid nozzle blocking or any corrosion.

Please cut off the power immediately after cleaning and put the machine in safe place and avoid any exposure to wet, sun collision and easy to be reached by children.

Trouble shooting

1. Not running:

Causes:

- 1.Plug loosened, bad contact
- 2.switch malfunction
- 3.Carbon brush wear

Solution: 1.recheck power plug

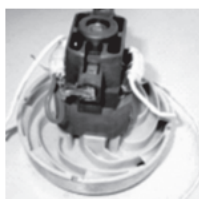
2.recheck switch plug

3.change the carbon brush following the below instruction

A. Take out the Universal Motor from the sprayer makes sure all the parts complete and undamaged.

B. Press down the Spigot on the Outer frame of the carbon brush using the slotted screwdriver, check the below picture for your reference.

C. Pull the carbon brush out of the stand using the needle-nose pliers.



- D. Prepare the new carbon brush, strip off the Universal Motor power line. Compress the new carbon brush and the power line tightly.
- E. Put the carbon brush back on the stand of the motor depresses the carbon brush. Refer to the below picture.
- F. Put the Universal Motor back to the motor cover initially.



2. Machine runs without spraying

Causes : Flow rate valve or spray nozzle blockage

Solution: Use iron wire or high pressure cylinder to inject air from nozzle to dredge

Cause: Solution pipe falls off

Solution :Reinstall it

Cause: the adjustable sprayer head locked

Solution: Reinstall it



Correct Way

Wrong Way

3. Interrupted spraying

Causes ;Solution pipe falls off or breakage.

Solution: Reinstall or replace it.

4. Unusual sound from machine:

Causes: Air inlet plugged

Solution: Remove the obstruction at air inlet

Warranty Service

One year warranty guarantee service for the main parts, while the O-ring(23&24) and sponge(29) three months only.

Warranty period and contents:

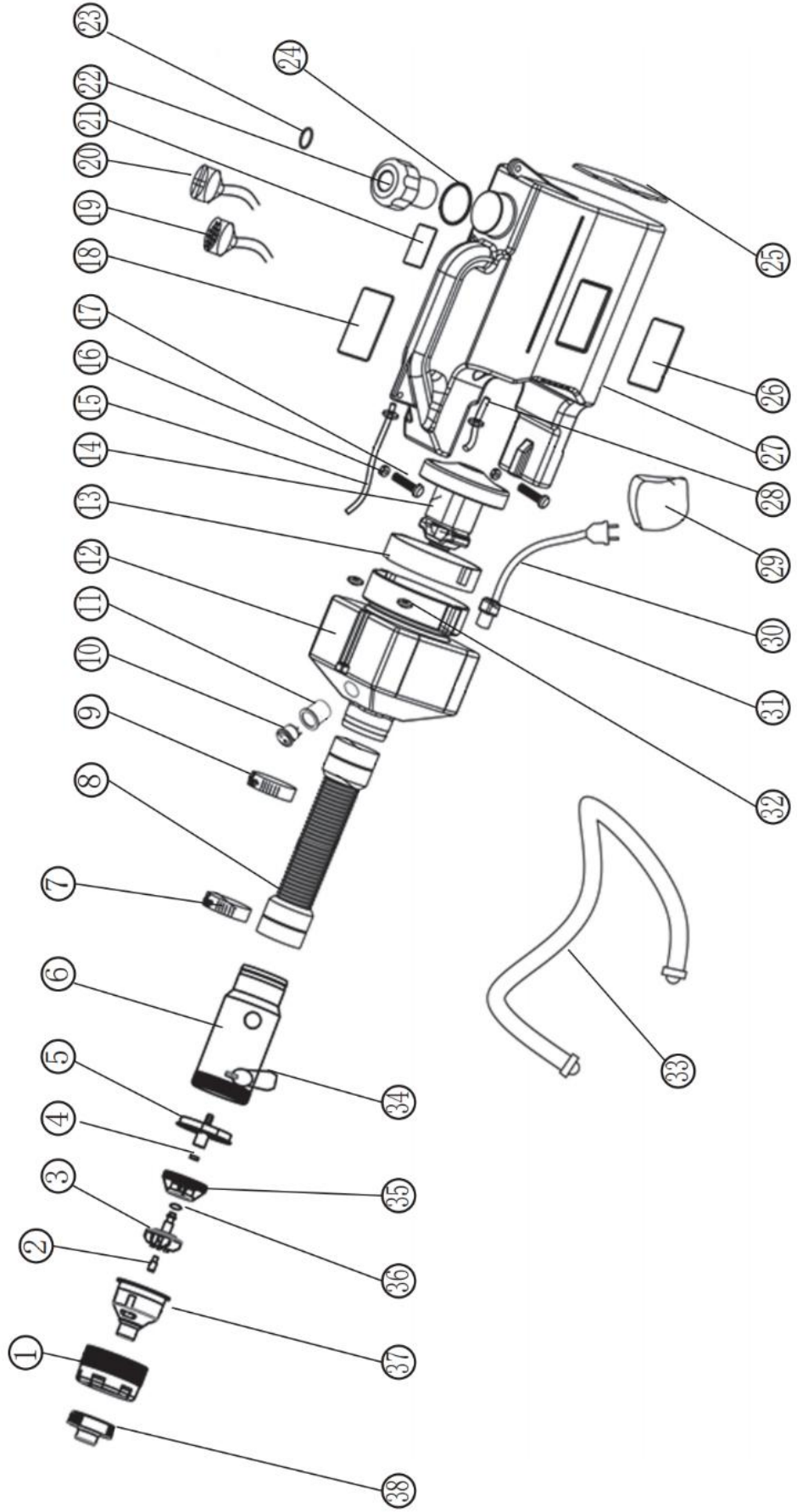
The following conditions are not in the scope of guarantee:

1. The damages to the Metal parts, host, and rubber pads because of using the liquids with high strength corrosion.
2. The breakdowns or damages because privately changed the production structures or the production parts.
3. Not following the Manual Instruction during operation or maintenance.
4. Any artificially damage caused by improper operation or overloaded usage.
5. Change the carbon brush when the accumulative time of use exceeds 300 hours.

Packing List

Item	Parts Name	Model No.	Qty	Remarks
1	Machine body		1	
2	Carbon Brush	AA190120037/SI	2	Quick-wear part
3	Belt		1	
4	Manual Instruction		1	
5	Quality Certificate		1	

ULV Cold Fogger parts list



Item	Name	Item	Name
1	spray-head cap-2	20	check valve
2	Φ3 nozzle core	21	warning
3	nozzle	22	cap
4	washer	23	O-ring 7.1*1.8
5	spray-head support frame	24	O-ring 47*3.5
6	spray-head shell	25	warning
7	clamp 40-63	26	logo
8	bellows	27	tank
9	clamp 40-63	28	inlet pipe
10	switch	29	sponge
11	sheath	30	cable
12	motor shield	31	PG-7connector
13	seal ring	32	rubber ring Φ7
14	motor	33	belt
15	outlet pipe	34	hooker
16	M4 cap nut	35	spray-head holder
17	M4*18 screw	36	Φ6*1.8 O-ring
18	label	37	spray-head cap-1
19	filter	38	damper